

Product Sheet

H_TROP2 CT26 Cell Line

Catalog number: GM-C33032

Version 3.3.1.241203

| | |
|------------------------------|---|
| Description | H_TROP2 CT26 Cell Line is a clonal stable CT26 cell line that constitutively expresses the human TROP2 gene, constructed using lentiviral technology. |
| Quantity | 5E6 Cells per vial, 1 mL |
| Product Format | 1 vial of frozen cells |
| Shipping | Shipped on dry ice |
| Storage Conditions | Liquid nitrogen immediately upon receipt |
| Target | Human_TROP2 |
| Gene ID/Uniprot ID | P09758 (AA Met 1 - Ile 297) |
| Host Cell | CT26 |
| Recovery Medium | RPMI 1640+10% FBS+1% P.S |
| Growth medium | RPMI 1640+10% FBS+1% P.S+4 µg/mL Puromycin |
| Note | None |
| Freezing Medium | 90% FBS+10% DMSO |
| Growth properties | Adherent |
| Growth Conditions | 37°C, 5% CO ₂ |
| Mycoplasma Testing | The cell line has been screened to confirm the absence of Mycoplasma species. |
| Safety considerations | Biosafety Level 2 |
| Note | It is recommended to expand the cell culture and store a minimum of 10 vials at an early passage for potential future use. |

Materials

| Reagent | Manufacturer/Catalogue No. |
|--|-----------------------------|
| RPMI 1640 | VivaCell/C3010-0500 |
| Fetal Bovine Serum | Cegrogen biotech/A0500-3010 |
| Pen/Strep | Thermo/15140-122 |
| Puromycin | Genomeditech/GM-040401 |
| Anti-H_TROP2 hIgG1 Antibody(Datopotamab) | Genomeditech/GM-26561AB |

Figures

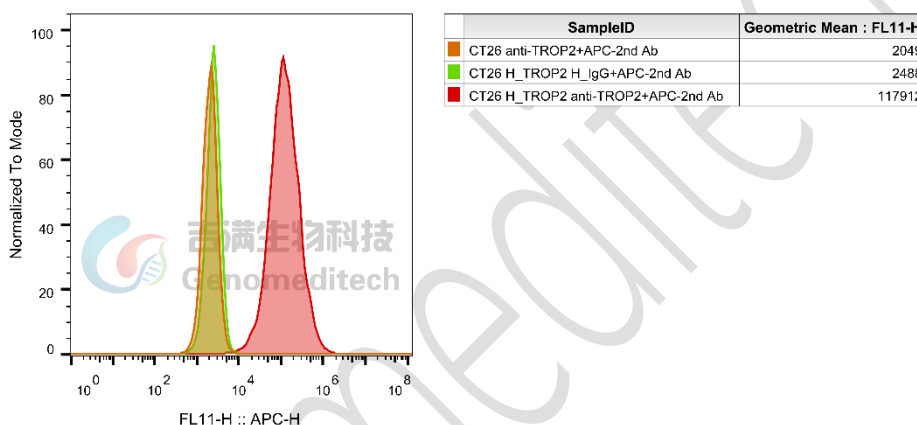


Figure 1 | H_TROP2 CT26 Cell Line(Cat. GM-C33032) was determined by flow cytometry using Anti-H_TROP2 hIgG1 Antibody(Datopotamab) (Cat. [GM-26561AB](#)).

Cell Recovery

Recovery Medium: RPMI 1640+10% FBS+1% P.S

To insure the highest level of viability, thaw the vial and initiate the culture as soon as possible upon receipt. If upon arrival, continued storage of the frozen culture is necessary, it should be stored in liquid nitrogen vapor phase and not at -70°C. Storage at -70°C will result in loss of viability.

- Thaw the vial by gentle agitation in a 37°C water bath. To reduce the possibility of contamination, keep the O-ring and cap out of the water. Thawing should be rapid (approximately 2 - 3 minutes).
- Remove the vial from the water bath as soon as the contents are thawed, and decontaminate by dipping in or spraying with 70% ethanol. All of the operations from this point on should be carried out under strict aseptic conditions.
- Transfer the vial contents to a centrifuge tube containing 5.0 mL complete culture medium and spin at approximately 176 x g for 5 minutes. Discard supernatant.
- Resuspend cell pellet with the recommended recovery medium. And dispense into appropriate culture dishes.

- e) Incubate the culture at 37°C in a suitable incubator. A 5% CO₂ in air atmosphere is recommended if using the medium described on this product sheet.

Cell Freezing

Freezing Medium: 90% FBS+10% DMSO

- Centrifuge at 176 x g for 3 minutes to collect cells.
- Resuspend the cells in pre-cooled freezing medium and adjust the cell density to 5E6 cells/mL.
- Aliquot 1 mL into each vial.
- Place the vial in a controlled-rate freezing container and store at -80°C for at least 1 day, then transfer to liquid nitrogen as soon as possible.

Cell passage

Growth medium: RPMI 1640+10% FBS+1% P.S+4 µg/mL Puromycin

For the first 1 to 2 passages post-resuscitation, use the recovery medium. Once the cells have stabilized, switch to a growth medium.

- Remove and discard culture medium.
- Briefly rinse the cell layer with PBS to remove all traces of serum that contains trypsin inhibitor.
- Add 1.0 mL of 0.25% (w/v) Trypsin-EDTA solution to dish and observe cells under an inverted microscope until cell layer is dispersed (usually within 30 to 60 seconds at 37°C).
- Note: To avoid clumping do not agitate the cells by hitting or shaking the flask while waiting for the cells to detach. Cells that are difficult to detach may be placed at 37°C to facilitate dispersal.
- Add 2.0 mL of growth medium to mix well and aspirate cells by gently pipetting.
- After centrifugation, resuspend the pellet and add appropriate aliquots of the cell suspension to new culture vessels.
- Incubate cultures at 37°C.

Subcultivation Ratio: A subcultivation ratio of 1:3 - 1:5 is recommended

Medium Renewal: Every 2 to 3 days

Notes

- After the stabilization of the cell condition, there will be fewer dead cells post-passage, the cell growth rate will tend to stabilize, cell morphology will become uniform, and the cells will appear robust.

Sequence

TACSTD2(TROP2) [P09758\(AICD\)](#)

MARGPGLAPPPLRLPLLLLVLAAVTGHTAAQDNCTCPTNKMTVCSPDGGRCQCRALGSGMAVDCSTLTS
KCLLLKARMSAPKNARTLVRPSEHALVDNDGLYDPDCDPEGRFKARQCNTSVCWCVNSVGVRRRDKGDL
SLRCDELVRTHHILIDLRHRPTAGAFNHSDLDAELRRLFRERYRLHPKFVAAVHYEQPTIQIELRQNTSQKAA

GDVDIGDAAYYFERDIKGESLFQGRGGLDLRVRGEPLQVERTLIYYLDEIPPKFSMKRLTAGLIAVIVVVVVA
 LVAGMAVLVI*

Related Products

| CLDN18 | |
|---|---|
| Cynomolgus_CLDN18.2-eGFP CHO-K1 Cell Line | H_CLDN18(isoform2)-eGFP 293 Cell Line |
| H_CLDN18.1-eGFP HEK-293 Cell Line | H_CLDN18.2 MC38 Cell Line |
| H_CLDN18.2 MKN45 Cell Line | H_CLDN18.2 MKN45 Cell Line(High Expression) |
| H_CLDN18.2 MKN45 Cell Line(Low Expression) | H_CLDN18.2 MKN45 Cell Line(Medium Expression) |
| H_CLDN18.2(isoform2) CHO-K1 Cell Line | H_CLDN18.2-eGFP CT-26 Cell Line |
| Mouse_CLDN18.2-eGFP CHO-K1 Cell Line | Rat_CLDN18.2-eGFP CHO-K1 Cell Line |
| Rhesus_CLDN18.2-eGFP CHO-K1 Cell Line | |
| Anti-CLDN18.2 hIgG1 Antibody(Zolbetuximab) | Anti-CLDN18.2 hIgG1 Antibody(LM-102) |
| HER3(ERBB3) | |
| Cynomolgus_ERBB3(HER3) CHO-K1 Cell Line | Cynomolgus_ERBB3(HER3) HEK-293 Cell Line |
| H_ERBB3(HER3) CHO-K1 Cell Line | H_ERBB3(HER3) HEK-293 Cell Line |
| H_ERBB3(HER3) MC38 Cell Line | Mouse_HER3(ERBB3) CHO-K1 Cell Line |
| Anti-ERBB3(HER3) hIgG1 Reference Antibody(Patrimonio) | Anti-H_ERBB3(HER3) hIgG1 Antibody(Barecetamab) |
| Human HER3 Protein; His Tag | |
| C-MET:HGF | |
| Cynomolgus_cMET CHO-K1 Cell Line | H_cMET CHO-K1 Cell Line |
| H_cMET HEK-293 Cell Line | |
| Anti-H_HGFR(Met) hIgG4 Antibody(Emibetuzumab) | |
| CD276(B7H3) | |
| Cynomolgus_CD276 CHO-K1 Cell Line | H_CD276(B7H3) CHO-K1 Cell Line |
| Anti-CD276(B7H3) hIgG1 Reference Antibody(Ifibio) | |
| Biotinylated Human CD276(B7H3 2Ig) Protein; His-Avi Tag | Biotinylated Human CD276(B7H3 4Ig) Protein; His-Avi Tag |
| Human CD276(B7H3 2Ig) Protein; His Tag | Human CD276(B7H3 4Ig) Protein; His Tag |
| TROP2(TACSTD2) | |
| Cynomolgus_Trop2 CHO-K1 Cell Line | Cynomolgus_TROP2 HEK-293 Cell Line |
| H_TROP2 CHO-K1 Cell Line | H_TROP2 HEK-293 Cell Line |
| H_TROP2 LLC1 Cell Line | H_TROP2 MC38 Cell Line |
| Anti-H_TROP2 hIgG1 Antibody(Datopotamab) | Anti-TROP2 hIgG1 Antibody(Hu2G10-5) |
| Anti-Trop2 hIgG1 Reference Antibody (Sacbio) | Anti-Trop2 hIgG1 Reference Antibody(Datbio) |
| Anti-Trop2-DXD ADC(Dar4)[Datopotamab deruxtecan,Dato-DXD] | Anti-Trop2-SN38 ADC(Dar8)[Sacituzumab govitecan] |
| Human TROP2 Protein; His Tag | |
| GUCY2C(GC-C) | |
| H_GUCY2C CHO-K1 Cell Line | H_GUCY2C HEK-293 Cell Line |
| Anti-H_GUCY2C hIgG1 Antibody(Indusatumab) | |

| ADC Related Product | |
|---|---|
| Anti-DXD Mouse IgG1 Antibody (23E21C5) | Anti-DXD Mouse IgG1 Antibody (4A5A12) |
| Anti-Dxd Mouse IgG2a Antibody (17D6A4) | Anti-Eribulin Mouse IgG2a Antibody (10F8G4) |
| Anti-MMAE Mouse IgG1 Antibody (11C10E3) | Anti-MMAE Mouse IgG2a Antibody (17A1K11) |
| Anti-MMAE Mouse IgG2a Antibody (8F6A3) | Mouse anti Human IgG-MMAE(Dar4) |
| Human IgG1 Isotype-DXD (Dar8) | Human IgG1 Isotype-Eribulin (Dar4) |
| Human IgG1 Isotype-MMAE (Dar4) | |
| Recombinant DT3C Protein | |

Limited Use License Agreement

Genomeditech (Shanghai) Co., Ltd grants to the Licensee all intellectual property rights, exclusive, non-transferable, and non-sublicensable rights of the Licensed Materials; Genomeditech (Shanghai) Co., Ltd will retain ownership of the Licensed Materials, cell line history packages, progeny, and the Licensed Materials including modified materials.

Between Genomeditech (Shanghai) Co., Ltd, and Licensee, Licensee is not permitted to modify cell lines in any way. The Licensee shall not share, distribute, sell, sublicense, or otherwise provide the Licensed Materials, or progenitors to third parties such as laboratories, departments, research institutions, hospitals, universities, or biotechnology companies for use other than for the purpose of outsourcing the Licensee's research.

Please refer to the Genomeditech Cell Line License Agreement for details.